

How will the study be undertaken?

The ENVIS-ion study will involve a partnership between researchers, general practice and the community.

GPs will be recruited as co-investigators and their patients in turn will be invited to join the study.

Who is eligible to participate?

Men and women can take part if they are:

- 70 years or over
- Already involved in ASPREE
- Able to attend their usual GP

People cannot take part if:

- they are not already enrolled in ASPREE or,
- they are unable to have an MRI due to metal implants, for example



Who is responsible for the ENVIS-ion study?

Australian National University:
Department of Geriatric
Medicine and the Clinical
Trials Unit at the Canberra
Hospital



Monash University:
Department of Epidemiology
and Preventive Medicine, and
the Department of Medicine,
Alfred Hospital.



Who is funding ENVIS-ion?

National Health and Medical
Research Council of Australia.

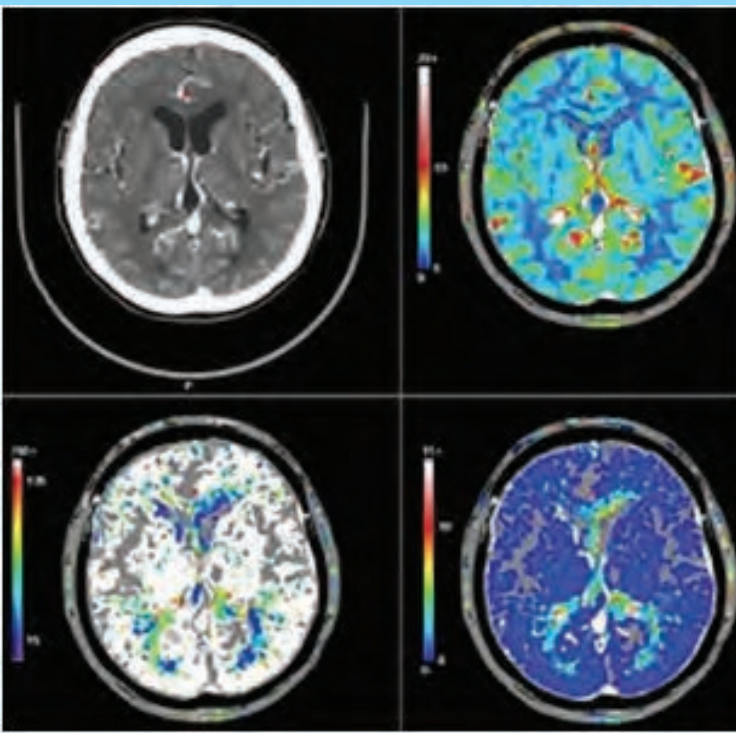


Are eyes
a window
to the
brain?

ENVIS-ion

ENVIS-ion
a substudy of ASPREE

Information Brochure



ENVIS-ion

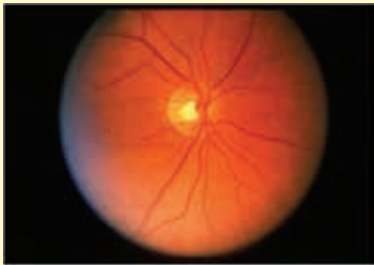
What is the purpose of the ENVIS-ion research project?

The ENVIS-ion study will determine if aspirin slows down the age-associated changes in the small blood vessels in the brain and the decline in brain function.

How will this research be done?

It is thought that changes in these blood vessels (in the brain) are also associated with changes in the small blood vessels in the back of the eye.

The ENVIS-ion study will examine and compare the small blood vessels in the brain, using brain scans (MRI - Magnetic Resonance Imaging), and the eyes using retinal photography.



a healthy retina

Who will participate?

The ENVIS-ion study will recruit approximately 300 people from Canberra and another 300 from Melbourne who are enrolled in the ASPREE clinical trial of low dose aspirin.

a Neuro-Vascular Imaging Study

What does participation involve?

A) Brain Magnetic Resonance Imaging (MRI)

An MRI will be performed to detect any structural changes in the brain. MRI is an advanced method of scanning that shows structures in the body using a strong magnetic field and harmless low energy radio waves. In this study we will be looking at the brain and its blood vessels. The scanning process is totally painless and has no known harmful effects. All potential volunteers will be closely checked for suitability.

The MRI can take 30-60 minutes.

B) Retinal Photography

A special digital camera will be used to take photographs of the retinal vessels which are blood vessels located on the back of the eyes.

This is a quick and easy examination taking about 5-10 minutes.



MRI Scan

Retinal Vascular Imaging



C) Cognitive Tests

Participants in ENVIS-ion will be asked to complete assessments that test memory, mental agility, concentration and decision making skills. Some of these tests are quite simple while others are more challenging.

The tests take 15-30 mins.

If any abnormal results are detected as a result of the brain scan or eye photography, the information will be conveyed to the participant's GP and any other practitioner requested by the participant.

